



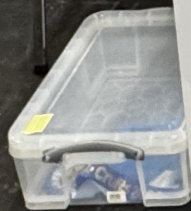
BC25

# The Saluki or Gazelle Hound Club



# Crufts

Royal Kennel Club



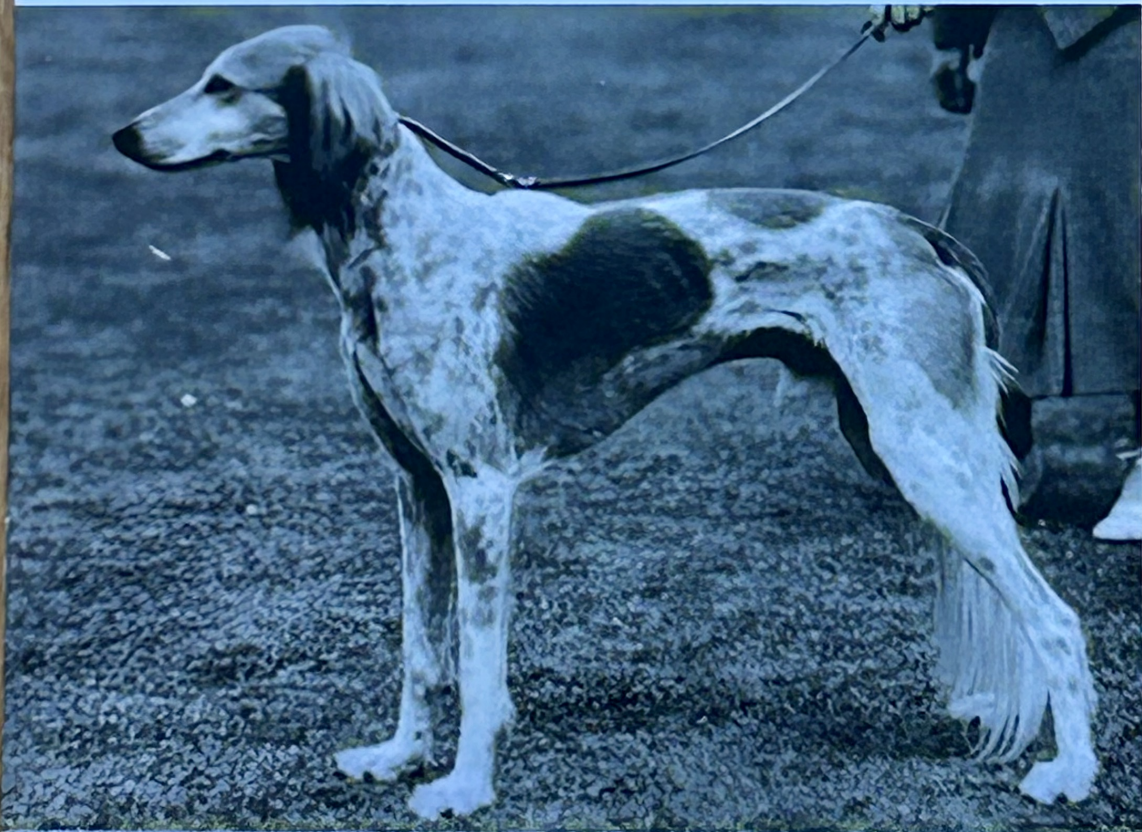


I met a **Saluki** at Crufts

amber  marie

# The Saluki

Peter Yardley



*Ch Nal Janzi – BOB Crufts 1938 and 1939*

**JK**  
hound sport



sighthounds  
y drive  
y, Speed,  
asm



Brains behind  
the beauty

# THE SALUKI

A breed with a reputation for being strong-willed and highly independent; but harnessing that high intelligence can be key to showing just what Salukis can achieve.

- ALTAI -

## THE AGILITY STAR

Smooth Saluki, Altai (Qazal Sarbaz Har Kala Rachi AWB AWS) was the first Saluki to gain his Agility Warrant title and compete in the main arena at Crufts.



- GRAHAM -

## THE ASSISTANCE DOG

Sharwassim Graham trained with Pawsable to become a fully-qualified assistance dog, providing support, friendship and much more to Ákos, who is on the autistic spectrum.



- ARTEMIS -

## PETS AS THERAPY (PAT)

Artemis (Ch/Bel/Lux Ch Alishamar Roxane JW ShCEx OSW) is a PAT dog. With her handler Sandra, she visits hospitals, homes for the elderly, disability care centres and schools giving comfort and support.



- SASCHA -

## A NOSE FOR SCENT WORK

Sascha (Al Zubeyda Mahabbah) has Level 5 in scent work, a remarkable achievement for any SIGHThound. Her training replicates that of dogs used to detect explosives, medical conditions and carry out search and rescue.



## THE SALUKI GOOD CITIZENS

Many Salukis have achieved the Bronze, Silver and Gold Certificates with the RKC Good Citizen Training Scheme.



Crufts  
Royal Kennel Club  
Ring  
25  
In Partnership with:  
ROYAL CANIN  
JAMES WILBELLOVED

Crufts  
Ring  
28

Crufts  
Ring  
33

Crufts  
Ring  
32

26



*The Saluki*  
2026





Top UK Lure Coursing Dog 2025 LC Ch Tin Soldier, owned by Annette Schafer. Photo by Anifotografia.



A'sim Sha'rif Al Asmaani

# 25 Lure Coursing Season

by Groggen Liljeros  
 Photos, unless otherwise noted. Additional photos by Anifotografia & Natasha Hamilton.



ing to write this review of the lure coursing season and we have just started our journey to the UK for our last event of the season. The joint UK participants has been busy for the last few weeks, having been making their way across the channel. It is having a quiet moment to breathe until the next lot of exciting updates will start coming in. Updates, vet check reminders and eventually our plans on the field, which I hope to include later.

## Trials and Relationships

Last year, the lure coursing season started with the Spring Trials followed by the Spring Championship a few weeks later. This year it was a special as we had the pleasure of welcoming the Saluki specialist judge Per Nordahl (El-

Cazzino) from Sweden with Christina Da Costa from Denmark.

The Spring Championship had a large entry of Saluki competitors from Switzerland. One of the highlights was Saluki Qazal Kala Rachi, Altai, Masha Shavernev



Ch Qazal Sarbaz Har Kala Rachi at West Ilsley.



Ravensett La D... the lure at

## The Saluki or Gazelle Hound Club Open Show



Best in Show Oxana Chippendale with Int Ch (Bel, Lux, Fr) Imhotep Rears Natural Jasmine (imp Bel). Judge John Owen.



Best Puppy in Show Mike Strong with Xerxes Omar Ter Dolen (imp Bel).

Reserve BIS and BOSIS requested no photograph.

It was an honour, privilege and pleasure to be elected by the members to judge the Saluki or Gazelle Hound Club Open Show. I would like to thank all the people who helped to make this a special day, thanks to my excellent steward, Kev, who kept me organised, thank you to the committee who were able to attend, and their helpers, who made the show a lovely success. Everything was highly organised, and my wife Caroline and I were made very welcome. I was provided with excellent refreshments before, during and after the judging. Also, a very big thank you to all the exhibitors who entrusted their dogs and bitches to be assessed by me.

I was very pleased with the number and quality of the entry. Overall, I thought the general standard of confirmation and movement was very positive and of a high standard. Unfortunately, the movement of exhibits and exhibitors was rather erratic, lacking straight lines, detracting from the movement and overall presentation which did affect the placings.

judge: John Owen

# Amazing Adira

## Life with a Blind Sighthound

Claire Knowles



Do blind dogs chase their tail? Will a blind dog play fetch? Can a blind sighthound realistically lead a fulfilled and happy life?



### Absaluki!

It was October 2023. We were happy and settled with our two beautiful Saluki girls, Sura (Ch Micaaterra All I Breathe of Mahziba) aged 7 and her niece Mikah (Green Mikah Al Djiibaajah at Mahziba), who was 13 months. We had a vision of expanding our family through adoption when it seems

have a loving home. I sent best wishes and looked forward to seeing her successfully adopted.

A few weeks later there was another post. There she was, sporting a pink coat, out and about, legs and muzzle little longer, as cute as a button and again a request for suitable homes to contact the rescue. I experienced mixed emotions at this. I was sad that an adopter had not been found but took comfort in the fact that a suitable home was being prioritised – a dog with such special requirements would require careful

I showed the late partner Ian, who of her running area, little stick fringes blowing

'Look at this! blind and the for her', I ap the post, th she is gorge applied for whipped n never type explained was alwa experien Salukis, as true needs, ready



## The Portraits of Brigadier General and Mrs Lance The Road to Restoration

The portraits of Brigadier General Frederick Fitzhugh Lance and his wife Mrs Gladys Maud Lutwyche Lance have come to symbolise the acceptance of our ancient breed by western culture. They have been immortalized through Donald Wood's paintings, dated 1935 and 1936. These paintings were the property of Trevor Lance, only grandson of the Lances, who had moved from the UK to a small town called Veteran Gympie located near Brisbane, Queensland, Australia. Trevor had these paintings sitting in his loft so how fortunate the Saluki or Gazelle Hound Club was when Trevor decided that they could be gifted to the SGHC, as a 'goodwill' gesture. The only issue was how they would travel back to the UK, plus the cost of transporting these valuable paintings was always going to be a large consideration.

As you may or may not be aware, the casing and protecting of oil paintings is quite a technical affair and rather costly. We checked on the cost of surface transportation (ocean freight) as well as air freight. Ocean freight would be from Brisbane to Felixstowe or Southampton. Whereas air freight would be from Brisbane Airport to Heathrow Airport. The difference in cost was surprising negligible. Less

than container load (LCL) freight would mean that a wooden case would be co-loaded in a steamship container with anything between ten to one hundred items. This can mean that frequent handling of any items loading into a container could lead to damage being caused. Customs clearance up to two weeks while can sit outside with The transit time

weeks door to door congestion time up to that i

Michael Williams

# Saluki Health

John Davies  
Saluki Breed Health Coordinator

## The progress of Saluki health in the last eight years

*I have been the Saluki Breed Health Coordinator since 2018 and shall be standing down from the role in 2026. The Saluki or Gazelle Hound and Northern Saluki Clubs will, hopefully, appoint a successor during the year, at which point I will officially stand down and oversee a suitable handover period. So, this is a good time to review how the support of Saluki Health has progressed since 2018.*

My first task, after taking on the role, was to introduce the

### Voluntary Code of Breeding

This formalised health testing for heart testing (particularly to identify dilated cardiomyopathy) and autoimmune hypothyroidism. Both breed clubs unanimously embraced the code at their 2019 AGMs.

I later became aware of Neuronal Ceroid Lipofuscinosis (NCL). For many years, cases of progressive neurodegeneration had been observed in Salukis, typically appearing within the first year of life, particularly abroad, and worsening over time, but the precise genetic cause wasn't known. In 2018, researchers identified a specific genetic mutation in Salukis that causes a form of NCL known as NCL8. This meant that a DNA test could identify if a Saluki was affected, a carrier, or clear. In 2020 the test was formally accepted by the Royal Kennel Club (RKC) and added to the Voluntary Code of Breeding. This test has identified 4 carriers in the UK since its introduction, but, because breeders have been excellent at carrying out testing for the disease (both within and outside the breed clubs) we have not had any reports of affected Salukis in the UK. The DNA test has effectively prevented the disease spreading here.

To read the code simply Google "Saluki voluntary code of breeding"

In 2021, I worked with the RKC Health Team to create the

### Breed Health and Conservation Plan

This was an extensive plan developed to

- > gather and analyse all available health information on a specific dog breed

- > identify the most significant inherited or complex health issues affecting that breed
- > prioritise those health concerns with evidence based data
- > provide guidance and resources to breeders and breed clubs so they can make informed decisions that improve overall breed health

The plan helps to:

- > highlight key health issues that affect the breed
- > provide breeders with better guidance for responsible breeding
- > improve the overall health of future generations of Salukis

To read the plan simply Google

In 2022, I initiated a *Saluki Breed Health Survey*

This ran from October 2021 to 190 Saluki owners responded

The five most prevalent issues were:

- Skin and/or coat
- Behavioural issues
- Cancer
- Dental problems
- Digestive issues

Disappointingly, Dilated Cardiomyopathy was not a feature of the survey. This disease was first identified in the 1990s and has since been successfully treated in many cases. On the most notable



Barley



### Rana, my first Saluki

Rana (Ruweis Izdihaar) came to me at 10 weeks old. She was my first Saluki and I classed her as Feral! She was wild and independent so I thought I would struggle with her. However, she was also very intelligent and liked treats so within days I taught her the basics and retrieving toys. She had super recall! I took her to training classes where she was so full of fun and attitude and literally showed off what she could do. She passed Bronze and Silver together then Gold, all at 1 year old.

### Well, you did say 'Go to Bed!'

Barley (Tasia Mystique Under Barleymoon) was taking his Gold test when we used to have them held out in the park. On this occasion it was a very windy day. The Go To Bed exercise involves placing their bed some paces away, then releasing them in a send-away to their bed to lie down and settle until you go up to them again and release them.

On this occasion as I sent Barley towards his bed there was a huge gust of wind

that took his bed off another paces or so. Undeterred, he trotted obediently off to catch up with and settled rather awkwardly on the crumpled heap of his bed... What a good boy. Sadly, the test was abandoned on this occasion due to the difficult circumstances, but when he did take the Gold at the very next opportunity, he passed first time. To be



Phoenix



Ankaa

tails of the survey please Google "Saluki health survey" to view on the Saluki website.

high coefficient of litter sizes. The was a promising

Full details of Googling "Sa

The Futu